

PHILIPS

SSD drive

2,5" SATA III

FMSS130B



User Manual

Thank you for your purchase and we care about your experience.

Dear Philips product owner,

Thank you for your confidence in Philips and purchase of a Philips internal solid state drive. This SSD is a great solution for accelerating your computer, fast storage, exchange and execution of your applications. This SSD is engineered to offer outstanding performance with enhanced durability.

We are confident it will satisfy your needs.

You are entitled to protection by one of our comprehensive warranties and service networks. If you have any questions about this SSD, please contact the store where you purchased the product, send an email to philips@leligroup.eu or visit www.philips.com/support.

We kindly ask you to read this user manual carefully before you install the SSD.

Thank you for buying a Philips product, we wish you much pleasure in using it.

Contents

- 1. Important safety instructions..... 4
- 2. Specifications 4
- 3. Installing the SSD in a desktop..... 5
- 4. Installing the SSD in a notebook..... 10
- 5. Notes.....11
- 6. Environmental information12
 - Disposal of your old product 12
- 7. **Compliance**13
 - Compliance with CE..... 13
 - Compliance with FCC..... 13
 - Social Compliance..... 14

1. Important safety instructions

Handle your SSD with care.

- Do not touch the connectors on your SSD.
- To minimize static electricity effect, touch your computer case before touching the SSD.
- Review the safety instructions in the product manual of your personal computer/ system where you intend to install the SSD before starting the installation process.

Operating and storage conditions:

- Operating temperature: 0°C to 70°C
- Storage temperature: -40°C to 85°C
- Operating humidity: 10% - 90% RH (No condensation)
- Storage humidity: 5% - 90% (No condensation)

2. Specifications

Descriptions: Philips internal solid state drive 2.5"

Capacity: 120 - 960GB

Form factor: 2.5"

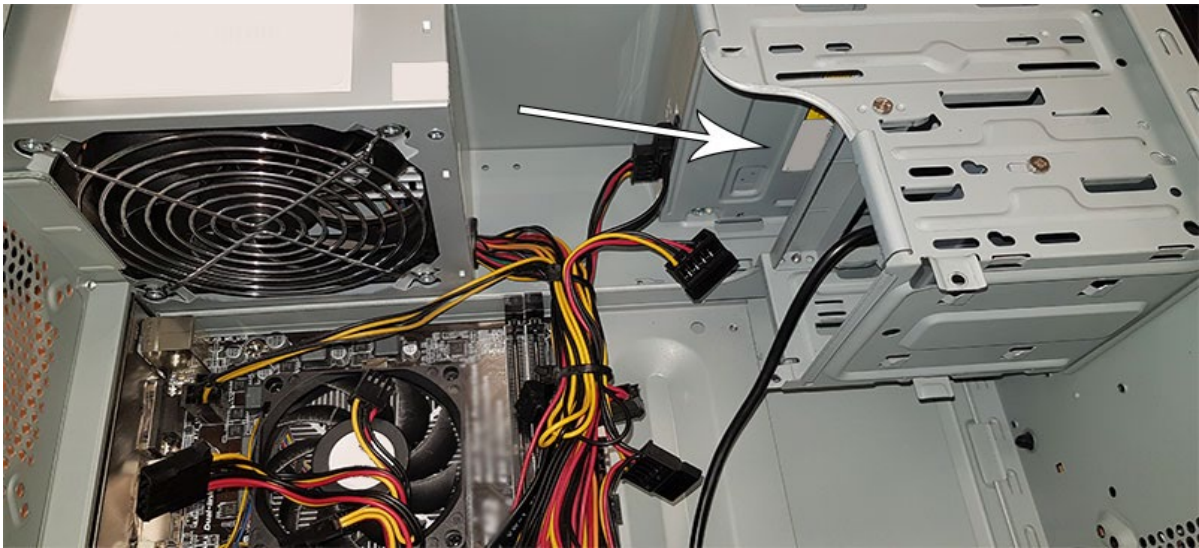
Interface: SATA III

Protocol: SATA 6 Gb/s

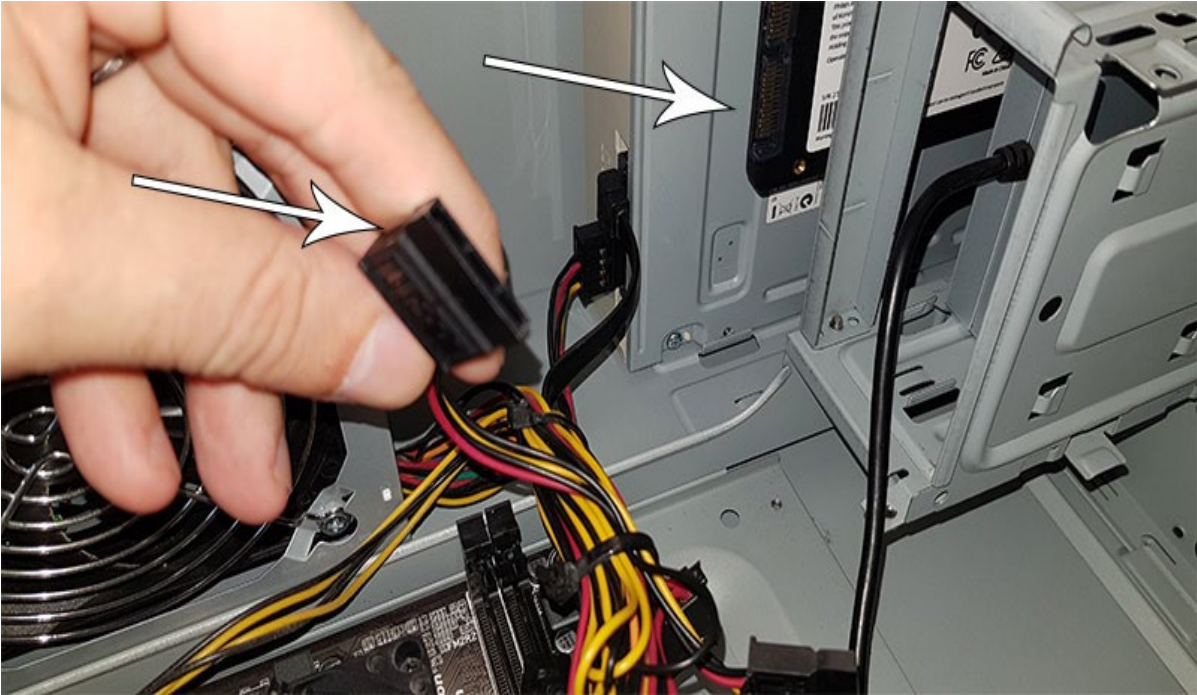
Read speed: Up to 550MB/s (based on internal testing)

3. Installing the SSD in a desktop

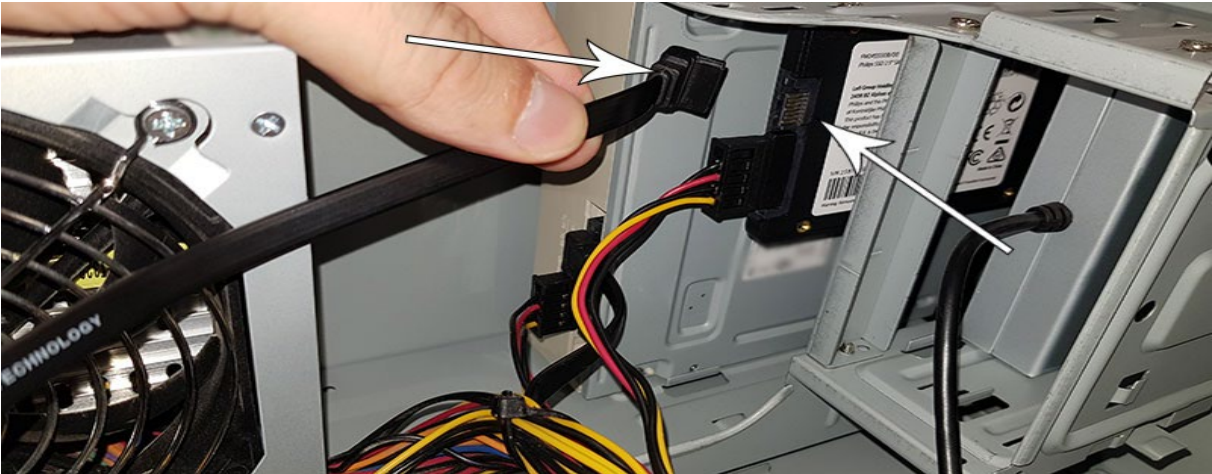
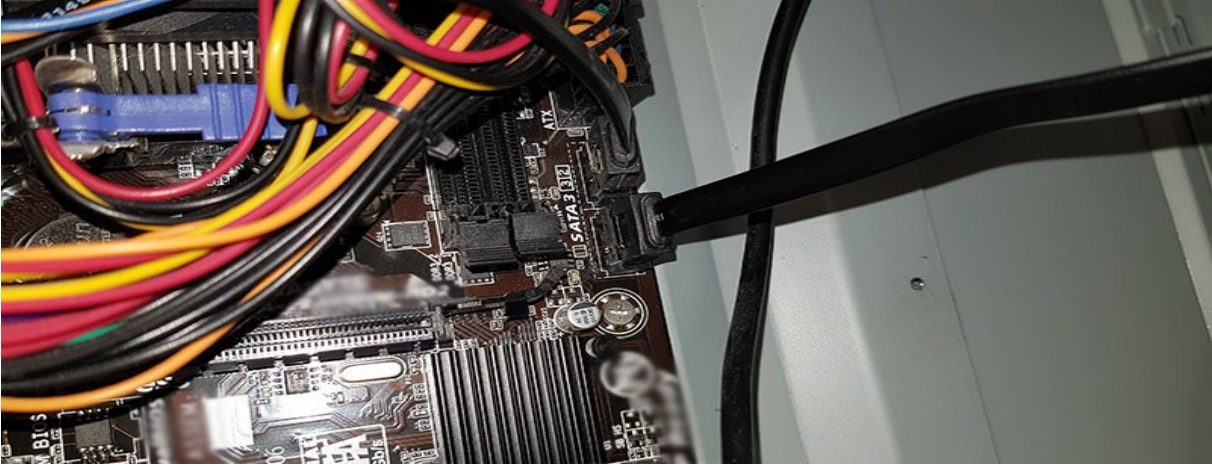
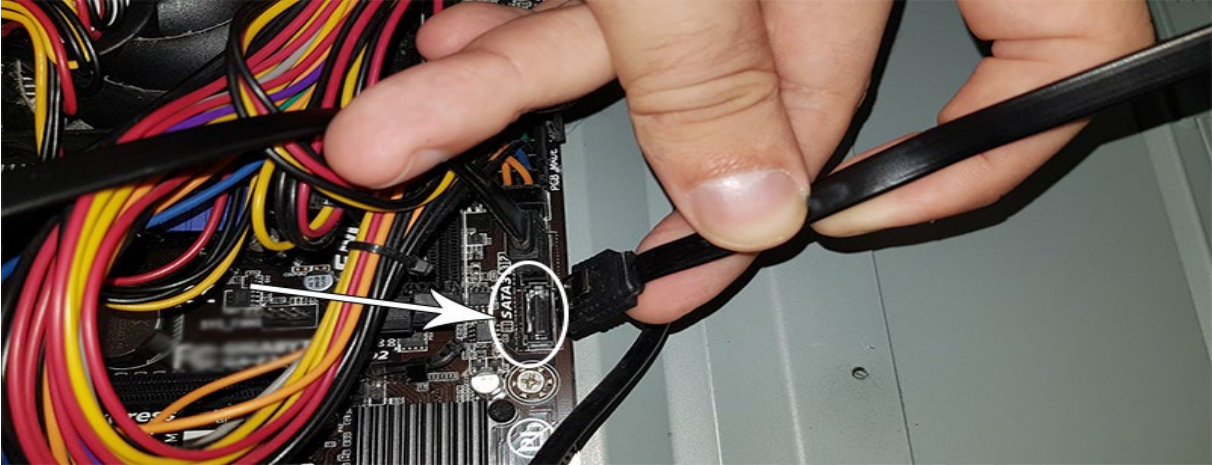
1. Turn off the power of the desktop and disconnect the main power cord from the wall outlet. After disconnecting the power cord, push the on/off button 3 times to remove all remaining voltage from the device.
2. Check the desktop's manufacturer's instructions about removing the desktop's casing and the location of the SATA connectors on your desktop's motherboard. Please be aware that you might need to copy your operating system to the new SSD while replacing your current disk.
3. Place the SSD in your desktop and secure the position with screws.



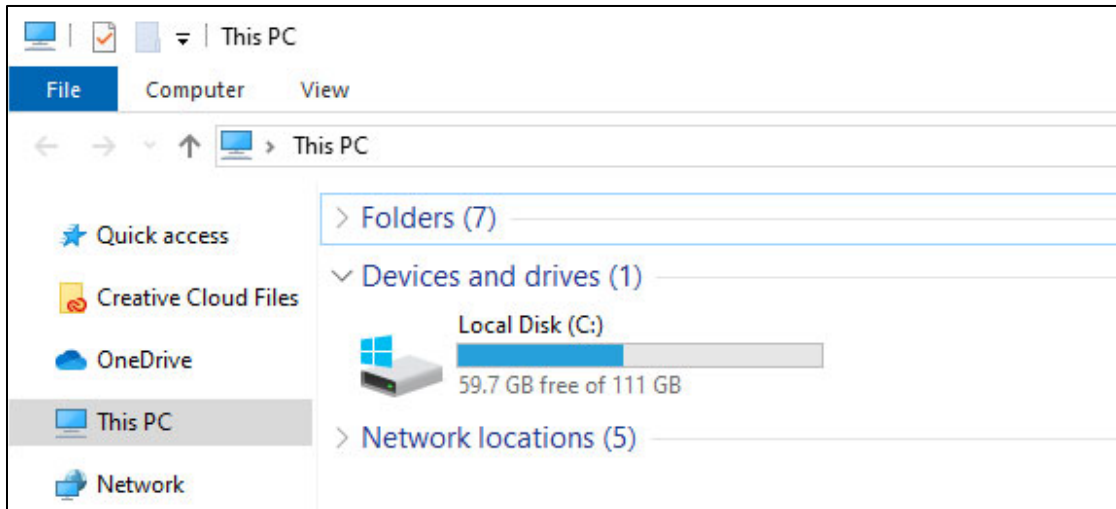
4. Locate the SATA power cable in the cable bundle that comes from the power supply of the computer and connect it to the SSD.



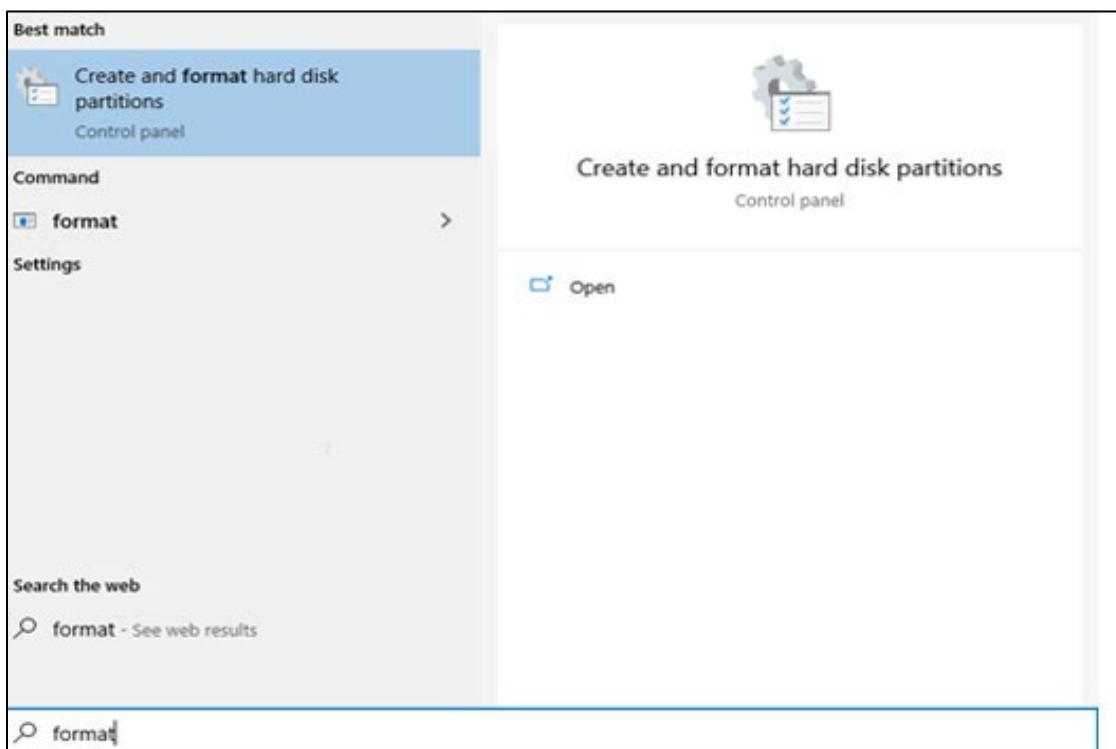
- 5. Connect the SATA data cable to the motherboard and the SSD (this cable is not included in the packaging). If you are replacing your old disk, you can use the SATA data cable that is already connected to the old disk.



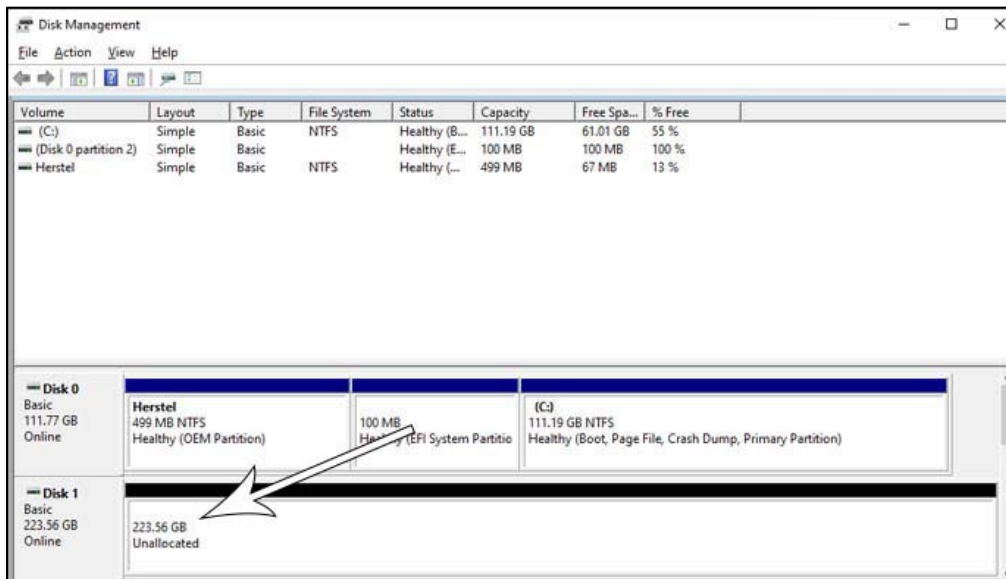
6. After connecting the SSD, you can close the casing of the desktop. Re-connect all the cables and turn on the Desktop.
7. If the SSD is not recognized by the computer and not visible (see image below):



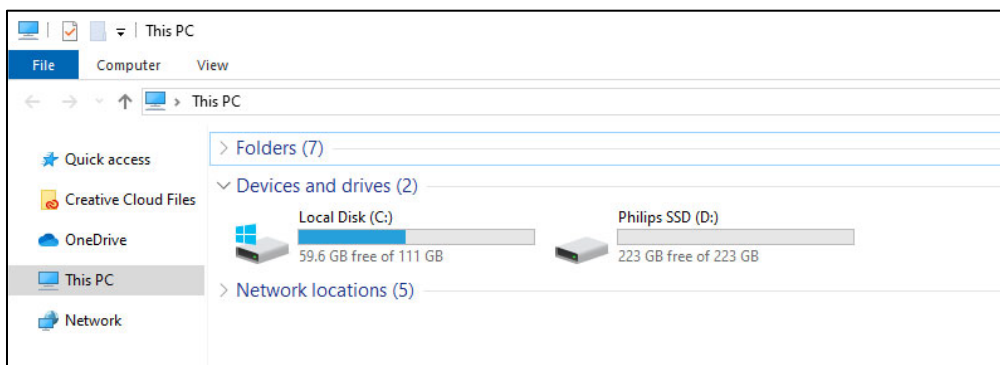
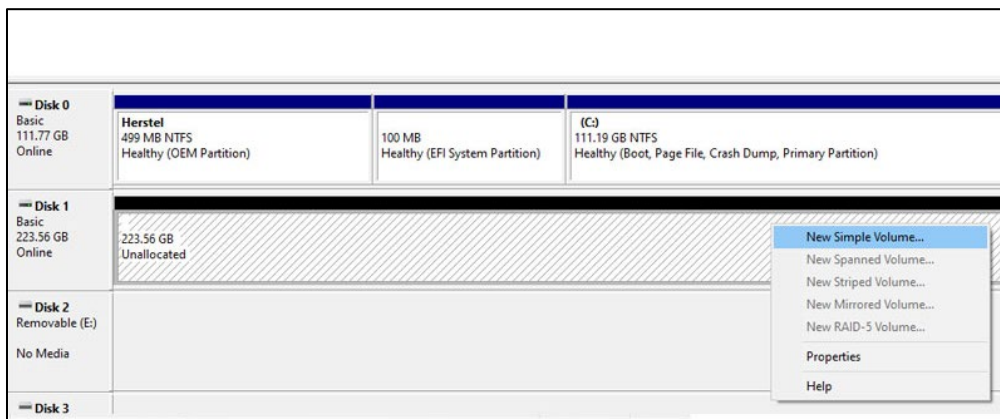
Click Start and type Format in the search field. If there is no search field in Windows 10, click start and start typing.



This shows that the SSD has not been formatted yet (Unallocated).



Drag your mouse to the information field of the SSD stating 'Unallocated', right click and enter the Wizard 'New Simple Volume'.



4. Installing the SSD in a notebook

1. Turn off the power of the notebook, remove the power cable from the power socket and remove the battery of the notebook. Then push the on/off button 3 times to remove all remaining voltage from the device.
2. Check the notebook manufacturer's instructions on how to remove the notebook's casing and the location of the SATA connectors in the notebook. Please be aware that you might need to copy your operating system to the new SSD while replacing your current disk.
3. To remove the old disk, please refer to the user manual of the notebook manufacturer for more instructions. If removal of battery is necessary, please follow the notebook manufacturer 's instructions carefully.
4. Place the SSD at the location of the old disk or the location indicated at the user manual of the notebook manufacturer, reinstall the battery if necessary. Then connect the notebook to a power source and turn on the notebook.

5. Notes

To avoid damage or malfunction:

Do not place the Solid State Drive (SSD) at locations that are:

- extremely hot or cold;
- vibrating;
- exposed to corrosive gases;
- dusty or dirty;
- very humid;
- exposed to direct sunlight.

Do not remove, damage or cover any product labels. Removal of such labels void warranty.

- Do not disassemble the SSD in any way. Disassembling shall void warranty.
- Product warranty is limited only to the SSD itself, when used normally in accordance with these operating instructions in the specified or recommended system environment. Services provided by the company, such as user support, are also subject to these restrictions.
- The company cannot accept liability for damage or loss resulting from the use of this unit, or for any claim from a third party.
- Be sure that you are aware and understand any information regarding warranty of your personal computer/ system where you intend to install the SSD. Any unauthorized work on your personal compute/system may void the system's manufacturer warranty.

6. Environmental information

All unnecessary packaging has been omitted. We have tried to make the packaging easy to separate into two materials: cardboard (hang card) and plastic (tray holding the SSD in position). The whole product packaging consists of materials which can be recycled and reused if disassembled by a specialized company. Please observe the local regulations regarding the disposal of packaging materials and old equipment.



This symbol on packaging signifies that the producer has made a financial contribution towards the recovery and recycling of packaging.

Disposal of your old product



Your product is designed and manufactured with high quality materials and components, which can be recycled and reused.



This symbol on a product means that the product is covered by European Directive 2012/19/EU and cannot be disposed of with normal household waste. We strongly advise you to take your product to an official collection point. Inform yourself about the local separate collection system for electrical and electronic products. Follow local rules and never dispose of the product with normal household waste. Correct disposal of old products helps prevent negative consequences for the environment and human health.

7. Compliance

Compliance with CE



This symbol means that the product is compliant with health, safety, and environmental protection standards for products sold within the European Economic Area. The product is manufactured in accordance with provisions imposed by EMC (Electromagnetic Compatibility) and RoHS (Restriction of Hazardous Substances) Directives. To minimize the environmental impact and take more responsibility for the earth we live on, the product complies with the restriction of SVHC (Substances of Very High Concern) and REACH (Registration, Evaluation, Authorization, and Restriction of Chemicals) regulated by the European Union.

Compliance with FCC



The device complies with the FCC rules, Part 15. Operation is subject to the following two conditions:

1. This device may not cause harmful interference, and
2. This device must accept any interference received, including interference that may cause undesired operation.

This equipment has been tested and found to comply with the limits for a Class B digital device, pursuant to part 15 of the FCC Rules. These limits are designed to provide reasonable protection against harmful interference in a residential installation. This equipment generates, uses and can radiate radio frequency energy and, if not installed and used in accordance with the instruction manual, may cause harmful interference to radio communications. However, there is no guarantee that interference will not occur in a particular installation. If this equipment does cause harmful interference to radio or television reception, which can be determined by turning the equipment off and on, the user is encouraged to try to correct the interference by one or more of the following measures: Reorient or relocate the receiving antenna. Increase the separation between the equipment and receiver. Connect the equipment into an outlet on a circuit that is different from that to which the receiver is connected. Consult the dealer or an experienced radio or television technician for help.

Canada:

This Class B digital apparatus meets all requirements of the Canadian Interference-Causing Equipment Regulations.

Social Compliance

The manufacturer of this product is certified with RBA standard (Responsible Business Alliance). This means that this product is designed and produced in the community that adheres to ethical sustainability and endeavors to protect the health, safety, and rights of the employees and environment in which they operate. The producer follows the rules based, among others, on the United Nations' International Labor Organization (ILO) 'code of conduct' and the Human Rights Declaration. The main principles affiliated with the social compliance include:

- no discrimination
- no child labor
- legal minimum wages
- protection on the number of hours people have to work
- no forced labor
- safe working environment
- measures against corruption

Having the Philips product manufactured in compliance with social sustainability values, where high standards are required of the supplier, helps contribute to the people involved in production of the product being treated fair, with dignity and respect.



Specifications are subject to change without notice.

Philips and the Philips Shield Emblem are registered trademarks of Koninklijke Philips N.V. and are used under license. This product is manufactured by and sold under the responsibility of MDD Hong Kong Holding Limited or one of its affiliates, and MDD Hong Kong Holding Limited is the warrantor in relation to this product.

UM_ FMxxSS130B/00_EN ver230512